



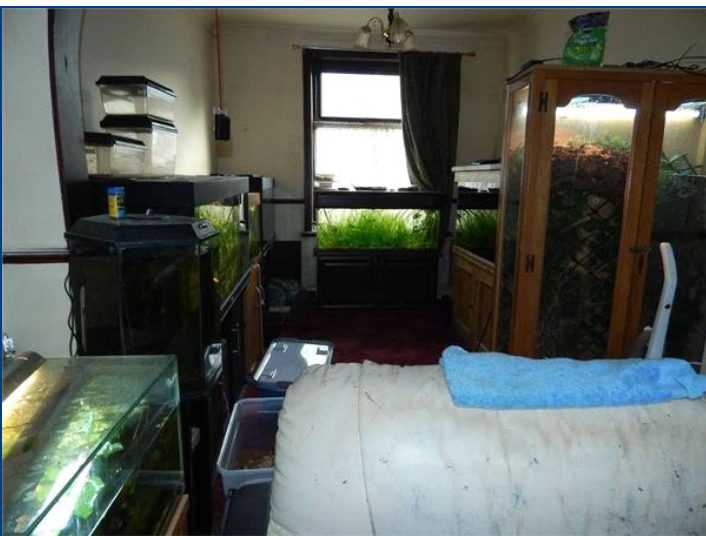
**NAPIER STREET
NELSON, BB9 0RF
£45,000**

**CLIFFORD SMITH
& BUCHANAN**



- GARDEN FRONTED MID TERRACE
- SEPARATE KITCHEN
- RENOVATION WORK REQUIRED

- LARGE THROUGH LOUNGE/DINING ROOM
- TWO DOUBLE BEDROOMS



Introduction

A garden fronted mid terrace which requires renovation work. The accommodation offers a large through lounge/dining room, separate kitchen, two double bedrooms and bathroom.

Entrance Hall

Stairs to the first floor.

Through Lounge/Dining Room

23' 11" x 14' 1" (7.30m x 4.30m) Windows to both the front and rear elevations. Fireplace with electric fire. Under stairs pantry.

Kitchen

Base and wall units with working surfaces. Single drainer sink unit. Built-in oven and hob. External door.

Landing

Bedroom One

10' 10" x 10' 6" (3.30m x 3.20m) Gas wall heater.

Bedroom Two

15' 1" x 9' 2" (4.60m x 2.80m)

Bathroom

Housing a three piece white suite incorporating corner panelled bath, pedestal wash hand basin and low level w.c.

Outside

Forecourt and yard to the rear.

Please Note

The electrical and gas appliances and fixtures and fittings have not been tested by the Agents and we are therefore unable to offer any guarantees or assurances in respect of them.
These particulars are believed to be correct but their accuracy is not guaranteed nor do they form part of

any contract.

